

2024 EOY cut-offs and reminder of security enhancement coming to BrokerHub.



Westpac will never send you a link directly to our sign in page, or request your personal or financial information. Always type westpac.com.au into your browser or use the Westpac mobile banking app to securely sign in. More Info - [visit westpac.com.au/hoaxemails](https://westpac.com.au/hoaxemails)
[View Online](#)

BROKER MATTERS

What's new and important to know

For access to BrokerHub.

[Visit broker site](#)

Hi,

We take the protection of data, including personal and financial information, very seriously. This is why we're reminding you about our introduction of enhanced security protections to make using BrokerHub even safer. We're also writing to share important end of year cut-off dates - please familiarise yourself with these.

Reminder: End of year cut-off dates.

The end of year is fast approaching, so we would like to take this opportunity to share our end of year cut-off dates so you're aware and are able to plan accordingly.

Area	Westpac
Security substitution requests	PSR for assessment by COB 3 December 2024 LOV returned by COB 17 December 2024

Discharge requests – sale or settlement	COB 2 December 2024
Discharge requests – refinance or OFI	COB 2 December 2024
Executed documents for purchase, settlements, refinances	COB 17 December 2024

Important BrokerHub update.

Reminder about nominating your One-Time Passcode (OTP) email address.

We communicated to you on **23 September** and **30 September 2024**, that we will be launching an additional layer of security for BrokerHub, with OTP. This is a secure, six-digit security code you will use each time you log in to BrokerHub.

You can now nominate an email address in BrokerHub, where your OTP will be sent. Later in November, these OTPs will be used to authenticate your login to BrokerHub. The nominated email may be a group email address to support admin, team members, and office staff.

Next steps if you haven't already nominated an email address for OTP.

1. Log in to BrokerHub using your unique ID.
 - o Note: You can access BrokerHub via the top-right hand corner of the [broker website](#).
2. Upon logging into BrokerHub, click on the red strip at the very top of the page, titled “One-Time Passcode is coming for BrokerHub login”, inviting you to nominate your OTP email address.
3. You will be directed to the User Profile landing page with a pop up to nominate your OTP email address. This may be a group email address to support admin and office staff logging in on your behalf.
4. Submit your nominated email address.
5. You will receive a message confirming this email has been successfully applied.
6. After you nominate an email address, it will be presented to you on your User Profile page.
7. Remember, while you can nominate your OTP email address now, you won't be prompted to use the OTP until later in November.

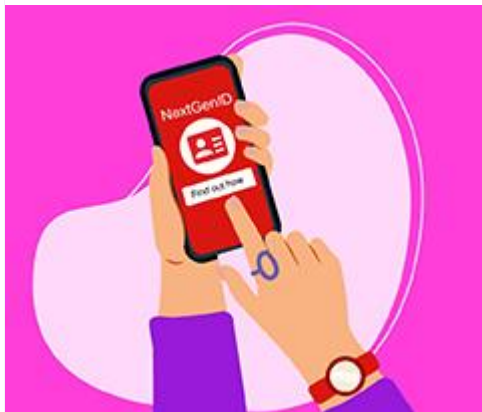
Log in to BrokerHub via the [broker website](#) and get started, today.

Please read our FAQ Guide should you have any questions about this new process or get in touch with your BDM team to find out more.

[Read FAQs](#)

For more information on ways we continue to prioritise cyber security for you and your clients, visit westpac.com.au/security.

Thank you for continuing to play a key role in keeping your client's data safe and secure.




NextGenID's new simplified ID process.

We've reduced required ID documents from 2 to 1. With this simplified Document Verification service, our pass rate has increased up to 94% as of September.

Search "Westpac Group ID Process Guide" on BrokerHub or [speak to your BDM team](#) to learn more.

We're here to help.

 westpac.com.au/brokers

 [1300 130 928](tel:1300130928)
(8:30am - 7:00pm AEDT)

Accessibility support.

Westpac welcomes calls through the National Relay Service. If you are deaf, hard of hearing, or have speech/communication difficulty, choose your access option detailed on the [National Relay Service](#).

Where English is a second language, contact us and a banker can arrange a language interpreter.

Visit [Westpac Access and Inclusion](#) for further information on our more accessible products and services for people with disability, who are neurodivergent or where English is a second language.

Westpac acknowledges the traditional owners as the custodians of this land, recognising their connection to land, waters and community. We pay our respects to Australia's First Peoples, and to their Elders past and present.



Things you should know

Conditions, credit criteria, fees and charges apply. Based on Westpac's credit criteria, residential lending is not available for Non-Australian resident borrowers. More information available at westpac.com.au/brokers.

This communication is intended for the recipient only and is not for distribution to your customers or any member of the general public. The information contained in the email is current as at Wednesday 30 October 2024. For more information on any of the promotions, products or services mentioned in this email, please contact your local Business Development or Lending Manager. This email is to be used as general information only and should not be considered a comprehensive statement on any matter and should not be relied upon as such. This email has been prepared without taking into account any individual objectives, financial situation or needs.



Westpac Secure Security Reminder:

Westpac will never send you a link that directly opens our sign in page, or any links requesting your personal or financial information. Always type westpac.com.au into your browser or use the Westpac mobile banking app to securely access your banking. For more information visit westpac.com.au/hoaxemails. Before accessing emails or the Internet, always ensure your computer has up-to-date security software. Find tips to protect yourself and avoid scams and viruses at westpac.com.au/security.

Westpac sent this message to Connective Lender Services Pty Ltd at product@connective.com.au. These details are included to help provide assurance that this is a genuine email from Westpac.

This is a service message sent by Westpac for the purpose of communicating factual information relating to our products or services. An unsubscribe option is not available due to the nature of this message.

If any of the information related to (or provided by) the Westpac Group that you rely on is printed, downloaded or stored in any manner on your systems, files or otherwise, please ensure that you update your systems and files with the most up-to-date information provided by us and rely only on such updated information.

© 2024 Westpac Banking Corporation ABN 33 007 457 141 AFSL and Australian credit licence 233714.

The Westpac Group, 275 Kent Street, Sydney, NSW 2000, AUSTRALIA.

[Privacy](#)